



定位销 DCPD63.1 Locator device DCPD63.1

主要特点:

- 铝制壳体
- 定位精度高
- 4 个安装面(前后左右)
- 扁平氮化双导杆
- 铜制导套
- 行程: 20,40, 60 mm
- 一体化气缸缸径 63 mm
- 3 个 G1/4"气源接口
- P+F 电感式接近开关 (M12x1 接口)

Main characteristics:

- Aluminium body
- High accuracy of positioning
- 4 mounting areas (front, back and on the sides)
- Double nitrited plate rods
- Bronze guiding bush
- Rod stroke: 20, 40, 60 mm
- Integrated pneumatic cylinder bore 63 mm
- 3 feeding ports 1/4"
- Inductive proximity switch P+F (connection M12x1)



[PDF](#)



[3D Step](#)



[Index](#)

索引. Index.

页码 Page	描述 Description	
1	主要特点 Main characteristics	
2	订货举例 Ordering example	
3	尺寸页码 Dimensional page	
4		DCPD63.1-AN...
5		DCPD63.1-BN...
6		DCPD63.1M-AN...
7		DCPD63.1M-BN...
8		DCMD63.1-AN...
9	DCMD63.1-BN...	
9	特性 Properties 电感式接近开关 / 气路图 Diagram for inductive proximity switch / Pneumatic plan	
10	备件 / Spare parts	
10	备注 / Notes	



订货举例

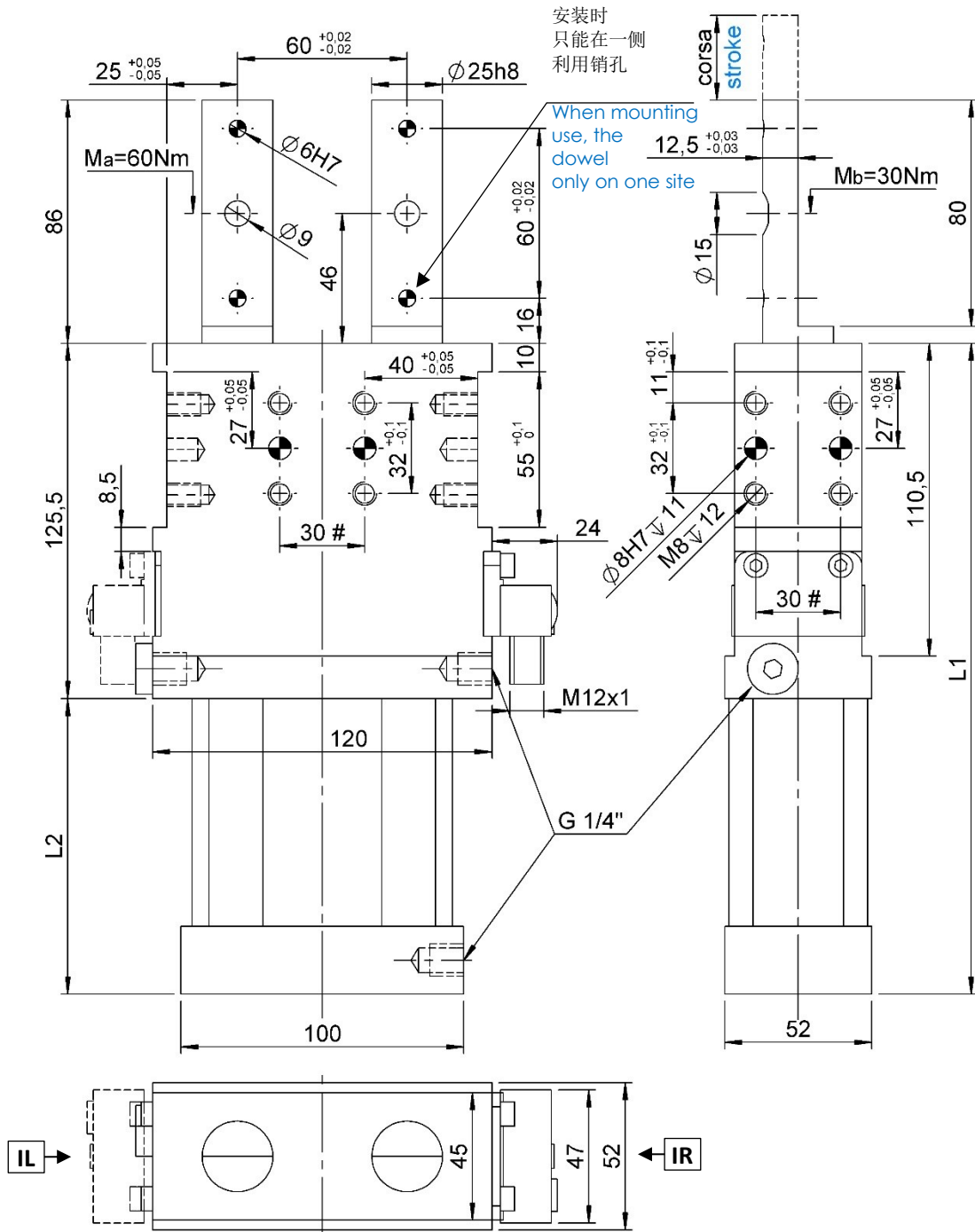
Ordering example.

DCPD63	-	AN	-	60	-	IR	-	LA										
<p>型号和气缸缸径: Type and cylinder bore:</p> <p>DCPD63.1 双导杆定位销 气缸缸径 63mm double locator pin with pneumatic cylinder bore 63mm</p> <p>DCPD63.1M 双导杆定位销 气缸缸径 63mm 带手动机构 double locator pin with pneumatic cylinder bore 63 mm and hand lever</p> <p>DCDM63.1 不可逆手动双导杆定位销 (无气缸缸体) Irreversible manual double locator pin</p> 		<p>行程: Stroke:</p> <table border="1" style="width: 100%; border-collapse: collapse; text-align: center;"> <tr> <td style="padding: 2px;">DCDM63.1</td> <td style="padding: 2px;">---</td> <td style="padding: 2px;">40</td> <td style="padding: 2px;"></td> </tr> <tr> <td style="padding: 2px;">DCPD63.1</td> <td style="padding: 2px;">20</td> <td style="padding: 2px;">40</td> <td style="padding: 2px;">60</td> </tr> <tr> <td style="padding: 2px;">DCPD63.1M</td> <td style="padding: 2px;">20</td> <td style="padding: 2px;">40</td> <td style="padding: 2px;">60</td> </tr> </table> <p>活塞杆类型: Rod type:</p> <p>AN: 扁平氮化活塞杆 带 2 个定位销孔 nitrided plate rod with 2 dowel holes</p> <p>BN: 扁平氮化活塞杆 带 1 个定位销孔 nitrided plate rod with 1 dowel hole</p> 	DCDM63.1	---	40		DCPD63.1	20	40	60	DCPD63.1M	20	40	60		<p>接近开关: Proximity switch:</p> <p>X: 无接近开关 without proximity switch</p> <p>IL: P+F 电感式接近开关 安装在左侧 inductive proximity switch P+F mounted on the left side</p> <p>IR: P+F 电感式接近开关 安装在右侧 inductive proximity switch P+F mounted on the right side</p> <p>备注.: 气源接口位置和电感式接近开关在同一方向 NOTE: <u>the feeding ports are always on the same side of the proximity switch</u></p> 		<p>手柄位置: (只适用于 DCDM63.1 e DCPD63.1M) Hand lever position: (specify only for DCDM63.1 and DCPD63.1M)</p> <p>LA: 手柄在右侧 lever on the right side</p> <p>LB: 手柄在左侧 lever on the left side</p>
DCDM63.1	---	40																
DCPD63.1	20	40	60															
DCPD63.1M	20	40	60															



DCPD63.1-AN...I...

定位销, D. 63, 双导杆, 行程 20/40/60 mm, 2 个定位销孔
Locator device, D.63, double rod, 20/40/60mm, 2 dowel holes



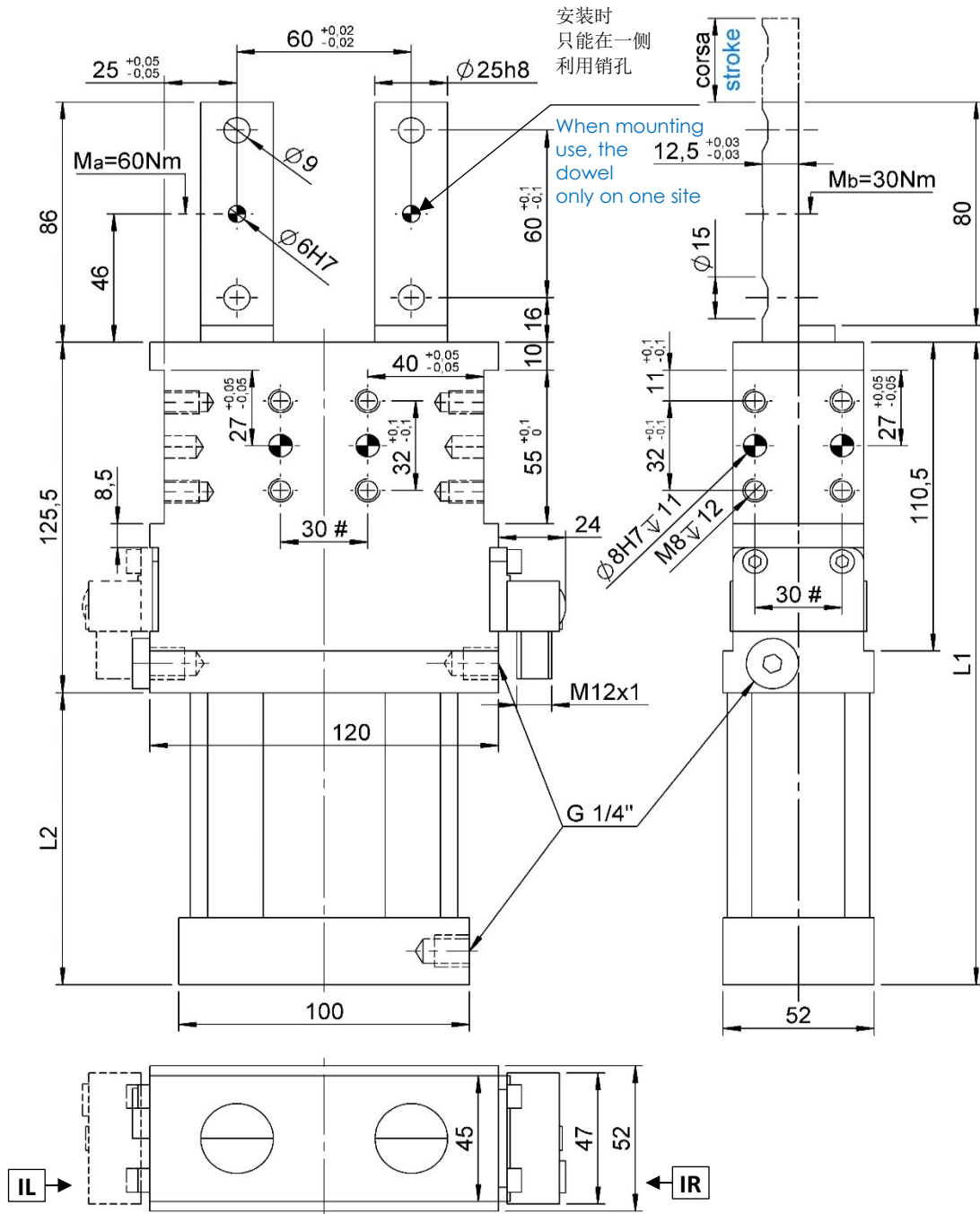
#公差: 定位销孔 ± 0.02 , 螺纹孔 ± 0.1
#Tolerances: dowel holes ± 0.02 , screw holes ± 0.1

类型 Type	气缸缸径 Cylinder bore	活塞杆行程 Rod stroke	L1	L2	重量 Weight	耗气量 (5bar) Air consumption (5 bar)	工作气压 Working pressure
	[mm]	[mm]	[mm]	[mm]	[Kg]	[l]	[bar]
DCPD63.1AN-20I...	63	20	210	84,5	~ 3,6	~ 0,7	2 - 8
DCPD63.1AN-40I...		40	230	104,5	~ 3,7	~ 1,3	
DCPD63.1AN-60I...		60	250	124,5	~ 3,8	~ 1,9	



DCPD63.1-BN...I...

定位销, D. 63, 双导杆, 行程 20/40/60 mm, 1 个定位销孔
 Locator device, D.63, double rod, 20/40/60mm, 1 dowel holes



#公差: 定位销孔 ± 0.02 , 螺纹孔 ± 0.1
 #Tolerances: dowel holes ± 0.02 , screw holes ± 0.1

类型 Type	气缸缸径 Cylinder bore	活塞杆行程 Rod stroke	L1	L2	重量 Weight	耗气量 (5bar) Air consumption (5 bar)	工作气压 Working pressure
	[mm]	[mm]	[mm]	[mm]	[Kg]	[l]	[bar]
DCPD63.1BN-20I...	63	20	210	84,5	~ 3,6	~ 0,7	2 - 8
DCPD63.1BN-40I...		40	230	104,5	~ 3,7	~ 1,3	
DCPD63.1BN-60I...		60	250	124,5	~ 3,8	~ 1,9	

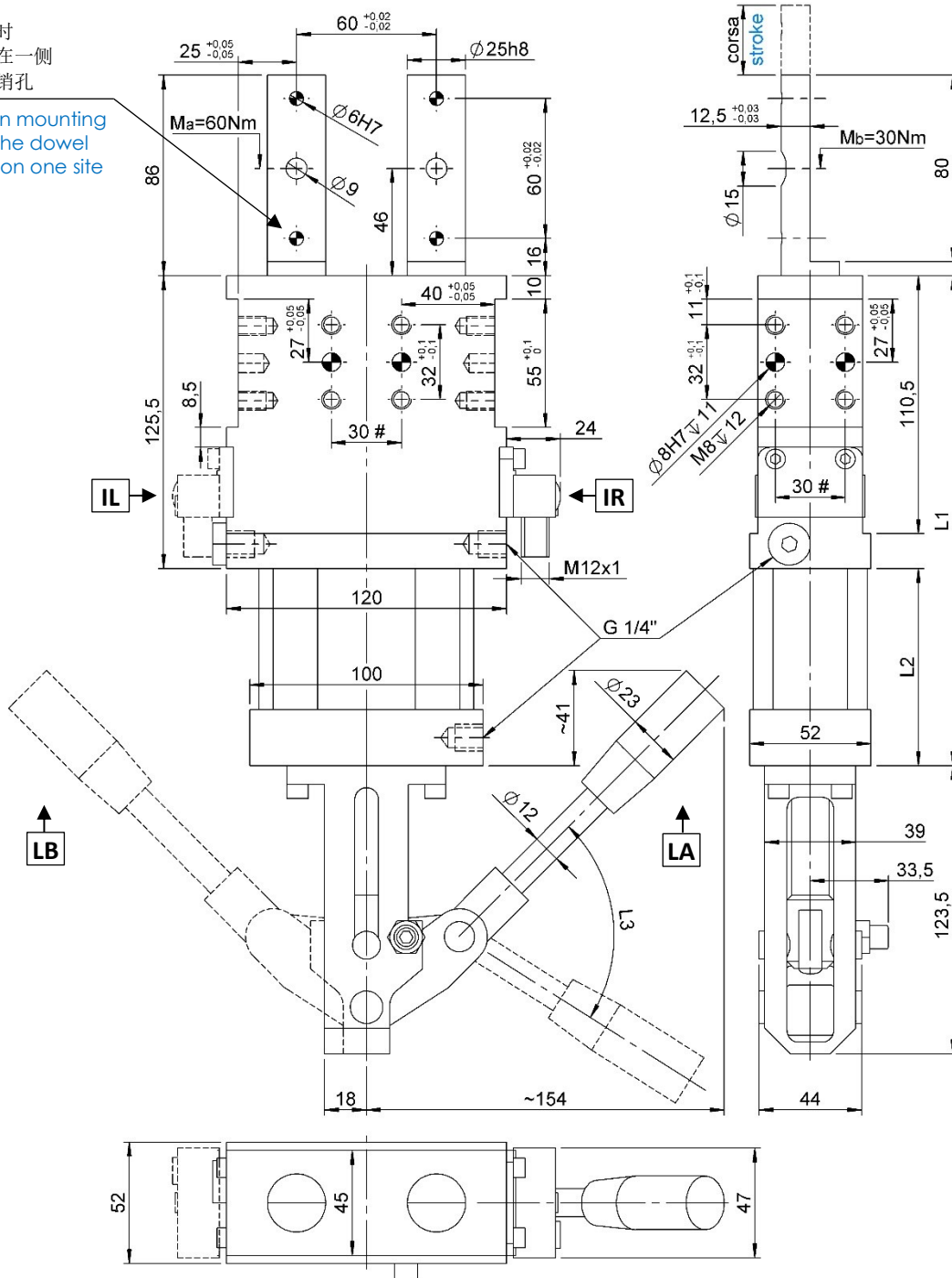


DCPD63.1M-AN...I...-L...

定位销 D.63.cmd. 带手动机构, 双导杆,行程 20/40/60 mm. 2 个定位销孔
Locator dev.,D.63,hand lev.,double rod, 20/40/60mm, 2 dowel holes

安装时
只能在一侧
利用销孔

When mounting
use the dowel
only on one site



#公差: 定位销孔 ± 0.02 , 螺纹孔 ± 0.1

#Tolerances: dowel holes ± 0.02 , screw holes ± 0.1

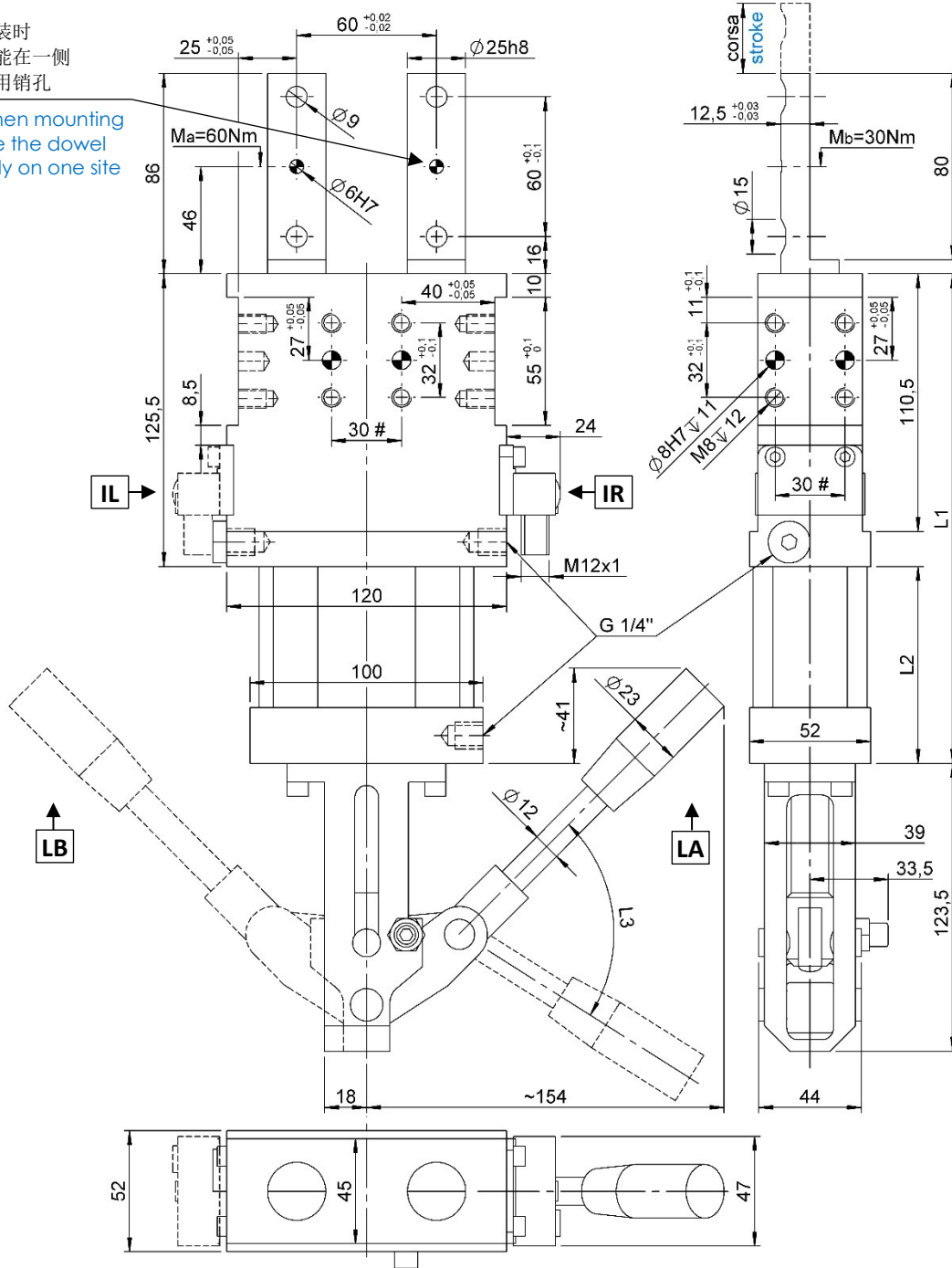
类型 Type	气缸缸径 Cylinder bore	活塞杆行程 Rod stroke	L1	L2	L3	重量 Weight	耗气量(5bar) Air consumption (5 bar)	工作气压 Working pressure
	[mm]	[mm]	[mm]	[mm]	[°]	[Kg]	[l]	[bar]
DCPD63.1MAN-20I...	63	20	210	84,5	26	~ 4,8	~ 0,6	2 - 8
DCPD63.1MAN-40I...		40	230	104,5	47	~ 4,9	~ 1,2	
DCPD63.1MAN-60I...		60	250	124,5	78	~ 5,0	~ 1,8	



DCPD63.1M-BN...I...-L...

定位销 D.63.cmd. 带手动机构,双导杆,行程 20/40/60 mm, 1 个定位销孔
Locator dev.,D.63,hand lev.,double rod, 20/40/60mm, 1 dowel holes

安装时
只能在一侧
利用销孔
When mounting
use the dowel
only on one site



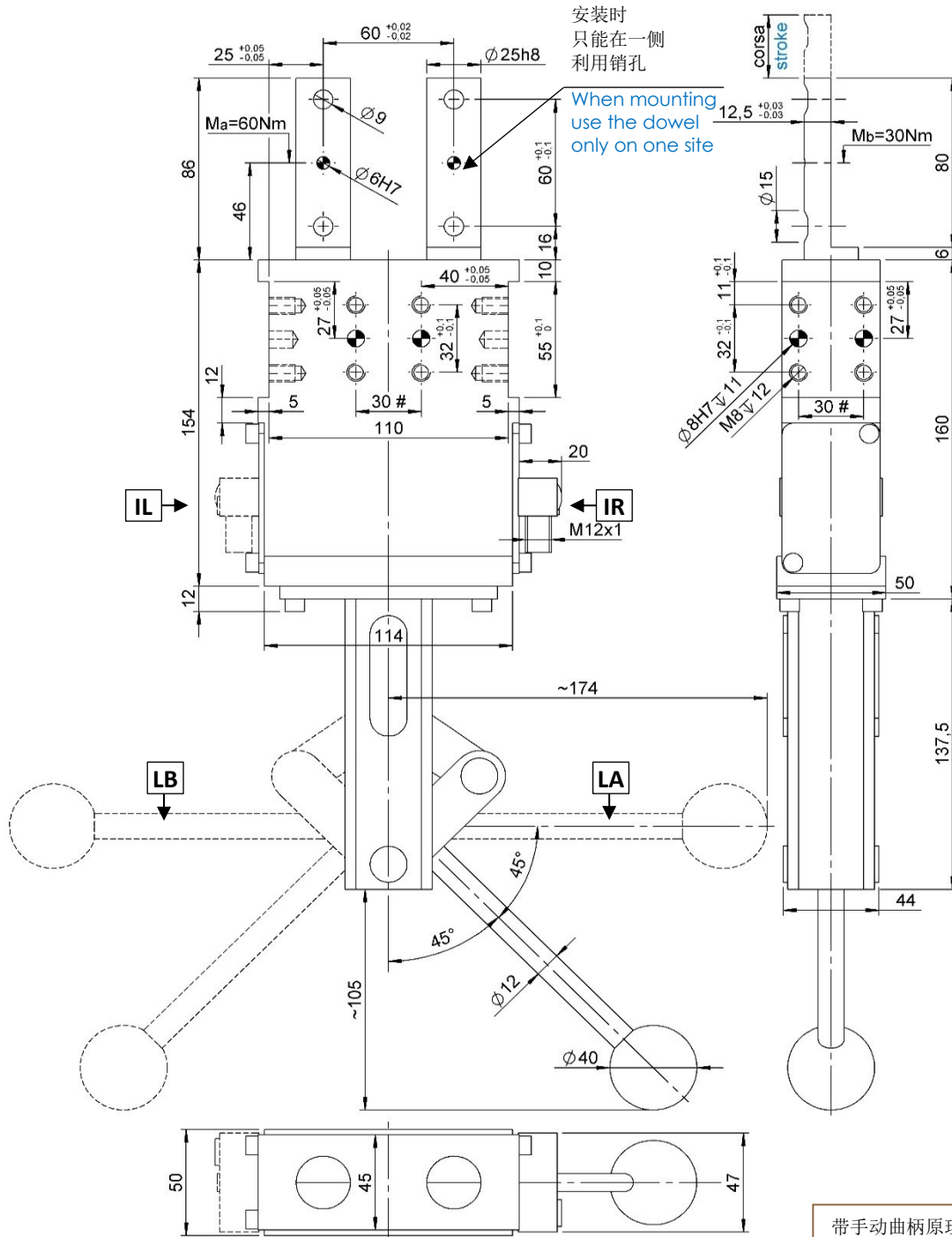
#公差: 定位销孔 ± 0.02 , 螺纹孔 ± 0.1
#Tolerances: dowel holes ± 0.02 , screw holes ± 0.1

类型 Type	气缸缸径 Cylinder bore	活塞杆行程 Rod stroke	L1	L2	L3	重量 Weight	耗气量(5 bar) Air consumption (5 bar)	工作气压 Working pressure
	[mm]	[mm]	[mm]	[mm]	[°]	[Kg]	[l]	[bar]
DCPD63.1MBN-20I...	63	20	210	84,5	26	~ 4,8	~ 0,6	2 - 8
DCPD63.1MBN-40I...		40	230	104,5	47	~ 4,9	~ 1,2	
DCPD63.1MBN-60I...		60	250	124,5	78	~ 5,0	~ 1,8	



DCDM63.1-BN40I...-L...

纯手动定位销, 双导杆, 行程 40 mm, 1 个定位销孔
Locator device, double rod, 40 mm, 1 dowel holes



#公差: 两个定位销孔 ± 0.02 , 螺纹孔 ± 0.1
#Tolerances: dowel holes ± 0.02 , screw holes ± 0.1

带手动曲柄原理机构。
Hand lever with toggle action mechanism.

类型 Type	活塞杆行程 Rod stroke	重量 Weight
	[mm]	[Kg]
DCDM63.1-BN40I...-L...	40	~ 2,9



特性

Properties.

推压力 Pressing force (5 bar)	牵引力 Tensile force (5 bar)	最大静态径向力 Static side force max.	最大 Ma 横向扭矩力 Max. Ma torque	最大 Mb 直向扭矩力 Max. Mb torque
[N]	[N]	[N]	[Nm]	[Nm]
1500	1350	200	60	30
		per stelo per rod		

电感式接近开关原理图 (cod.06706/行程/C).

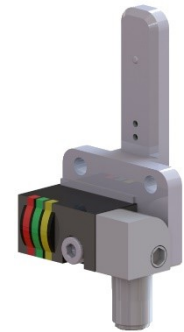
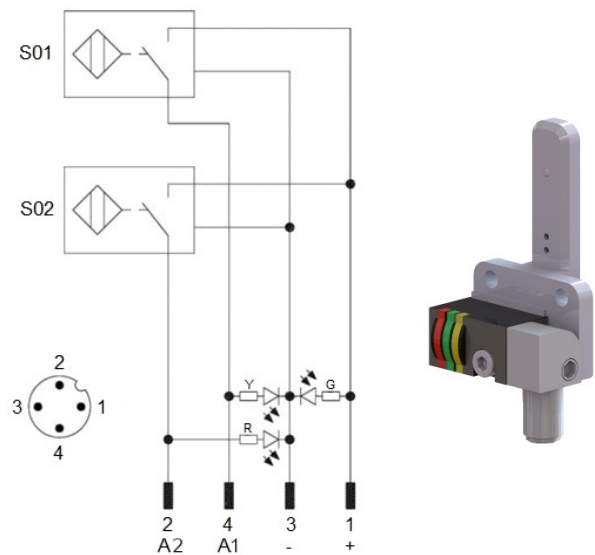
Diagram for Inductive proximity switch (cod. 06706/stroke/C).

(P+F)技术参数:

- 输出类型: PNP;
- 输入电压: 10-30 VDC;
- 最大换向电流: 200 mA;
- 消耗电流: < 25 mA;
- 电压差: <2 V
- 温度范围: -25° / 70° C.

Technical data (P+F):

- Output type: PNP;
- Feeding voltage: 10-30 VDC;
- Max. commutating current: 200 mA;
- Power supply: < 25 mA;
- Voltage drop: < 2 V;
- Temperature range: -25° / 70° C.



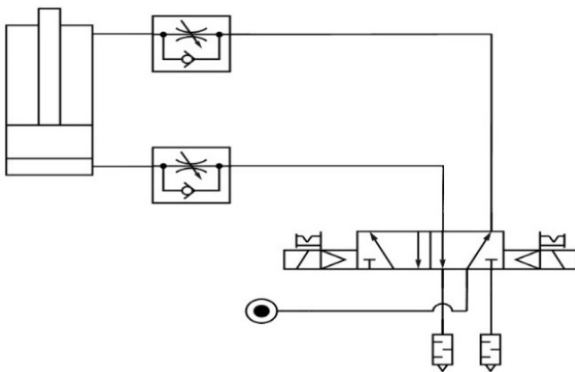
S01 = 打开信号
S01 = opening signal
S02 = 夹紧信号
S02 = closing signal

Y = 黄色 LED / yellow LED
G = 绿色 LED / green LED
R = 红色 LED / red LED

1 = 棕色线 / brown wire
2 = 黑色线 / black wire
3 = 蓝色线 / blue wire
4 = 白色线 / white wire


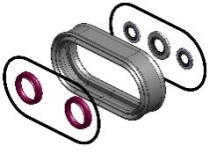
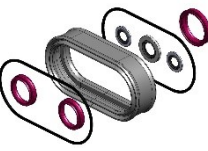
气路图.

Pneumatic plant.



类型 Type	耗气量 Air consumption (5 bar)	耗气量 Air consumption (6 bar)	工作气压 Working pressure
	[l]	[l]	[bar]
DCPD63.1...-20l	~ 0,7	~ 0,9	2 - 8
DCPD63.1...-40l	~ 1,3	~ 1,6	
DCPD63.1...-60l	~ 1,9	~ 2,3	
DCPD63.1M...-20...	~ 0,6	~ 0,7	
DCPD63.1M...-40...	~ 1,2	~ 1,45	
DCPD63.1M...-60...	~ 1,8	~ 2,2	

**备件****Spare parts.**

配套元件 # Kit	图片 Picture	描述 Description	代号 Article
接近开关 Proximity switch		P+F电感式接近开关 Inductive proximity switch P+F	06706/行程/C 06706/stroke/C
密封套装 Seals kit		适用于DCPD63.1型定位销密封组件 Seals for locator DCPD63.1	SCR-DCPD63.1
		适用于DCPD63.1M型定位销密封组件 Seals for locator DCPD63.1M	SCR-DCPD63.1M

本目录取消并替换了以前的目录。我们保留在没有任何通知的情况下进行添加或更改的权利。目录中的产品为标准产品；对特殊应用的任何请求都由技术/商务部门进行评估。本目录文档均属 VEP Automation S.r.l. 所有。未经授权许可，禁止任何形式的复制。

This catalogue cancels and replaces the previous ones. We reserve the right to make additions or changes without any notice. The products in the catalogue are standard; any enquiry of special applications is evaluated by technical/sales department. The complete documentation belongs to VEP Automation S.r.l. and without permission any kind of reproduction is forbidden.

VEP Automation Headquarters**VEP Automation S.r.l**

Via San Felice, 37
10092 Beinasco – Torino (Italy)
Tel. +39 011 3972572
Email: info@vepautomation.it
Web: www.vepautomation.it

VEP Automation Germany**VEP Automation GmbH**

Fritz Liebsch Str. 29
D 26723 Emden (Germany)
Tel. +49 04921 450758
Email: info@vepautomation.de
Web: www.vepautomation.de

VEP Automation America**VEP Automation S.A. de C.V.**

Av. Toluca 373 M Col. Olivar de los
Padres Del. Álvaro Obregón
01780 CDMX – (Ciudad de México)
Tel. +52 55 1718 0929
Email: info@vepautomation.mx
Web: www.vepautomation.mx

VEP Automation China**维亿普自动化（苏州）有限公司**

地址: 中国江苏省苏州市吴中区木渎镇
木东路 317 号 (联东 U 谷) 1 幢 401 室
Room 401, Building No 1, No 317, mudong Road,
Wuzhong, mudu District, Suzhou City (China)
电话. +86 512 6729 2226
邮箱: info@vepautomation.cn
网址: www.vepautomation.cn